

**RioTinto**

# Winter Road 2025

Diavik Site Specific Orientation

December 25, 2024



# Values and priorities

## Safety is Diavik's #1 priority.

- At Diavik, we believe that all workplace injuries, incidents, occupational illnesses and diseases are preventable.
- *"If it cannot be done safely, it will not be done at Diavik."*
- We expect everyone on our mine site to conduct themselves in a manner that upholds this value.
- This extends to our winter road drivers, working on the road, at camps as well as site.



# OUR LIFE SAVING RULES

- At Diavik we have Life Saving Rules as a fundamental pillar of our safety management system.
- Our Life Saving Rules are in place specifically to prevent fatalities. Where any individual works outside of these rules they are putting themselves and their co-workers at the risk of serious injury or death.
- These rules form the basis for safe work. They are not negotiable and must be followed without exception.
- Any breach of a Life Saving Rule will be fully investigated with corrective action taken, up to and including removal of site access privileges.



# OUR LIFE SAVING RULES



1. Always do a pre-operational inspection of your equipment.



2. Only operate tools and equipment you have been trained and authorized to use and have reviewed the SOP with a leader or trainer.



3. Always wear your seatbelt and ensure your equipment passes all safety checklists.



4. Make positive contact with the operator of equipment before entering their work area.



5. Use fall protection whenever there is a risk of falling or working at heights.



6. Isolate energy sources before you start a task.



7. Never work under a suspended load or unsupported ground and never leave a suspended load unattended.



8. Never enter a confined space without a permit.



9. Never bypass or tamper with a safety device.



10. Always have and understand the responsibilities for your permits, such as Hot Work Permit, Live Work Permit.



11. Always wear the right PPE for the job (i.e., flotation devices when working near water).



12. Be "fit for work". This means no drugs or alcohol when at site, and coming to site fit for work, mentally and physically.

# Critical Risk Management (CRM)

- We want everyone who arrives at Diavik to work safely.
- To help achieve this, we have a fatality risk management program that we need your participation in.
- Prior to departing the Winter Road Dispatch yard to offload your truck, you are required to conduct a walk around of your truck using a CRM check list provided by the Winter Road Dispatch to help make sure that your truck is safe to operate.
- We want to do what we can to make sure your visit to Diavik is safe and we need your help to do this.
- Please report any safety concerns that you see when conducting your walk around to the Winter Road Dispatch.

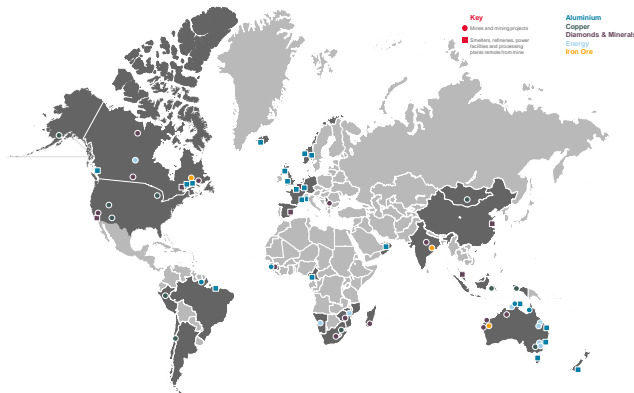


# A critical step towards zero fatalities

CRM provides a means to verify that critical controls are well designed, understood, in place and working at the front line – where the risk exists.

## CRM involves:

### Every Rio Tinto operation



### Every critical risk



### Every employee & contractor



# Health

Caring for our employees extends beyond physical safety and includes your health and wellbeing.

## First Aid Services

- Located in the main accommodations building, next to main entrance, and is staffed by Physician Assistants.
- If you feel sick, notify the Field Marshal over LADD 1 and call the TCWR Joint Venture Medical line at 1-833-247-2619

## Contact

- Dial 5901 or via radio via channel 6
- 5907 (WR Dispatch)

## Hours

- 5:00am to 7:30pm (on call from 7:30pm-5:00am)
- For after-hours emergencies/urgent matters only, dial 5901



# Health

## CODE 1 PROCEDURES

If a code 1 is called, go to your nearest muster station.

If you see an emergency:

1) Turn your Radio to Channel 1, or locate the nearest phone and dial 911 or 5555.

2) Call: **CODE 1 CODE 1 CODE 1**

3) State:

- Your name
- The nature of your emergency
- The location of the emergency





# Winter Road Dispatch

## Winter Road Driver Access to South Camp Facilities

Diavik is happy to welcome all winter road drivers into our south camp common area this year. The entrance to our dispatch office is pictured to the right (next to inbound lanes). The winter road dispatch is straight down the hall, and to the right (same spot as last year). Follow signage until you see the “Dispatch Office” sign (below)



All drivers in south camp common area must check-in with dispatch, and they will then be issued a visitors pass. A sign in/sign out sheet will be provided for all drivers that are issued a visitors pass to help ensure drivers whereabouts in the event of an emergency.



# Site Overview



Fuel Off Load South Tank Farm

Sleeping Area

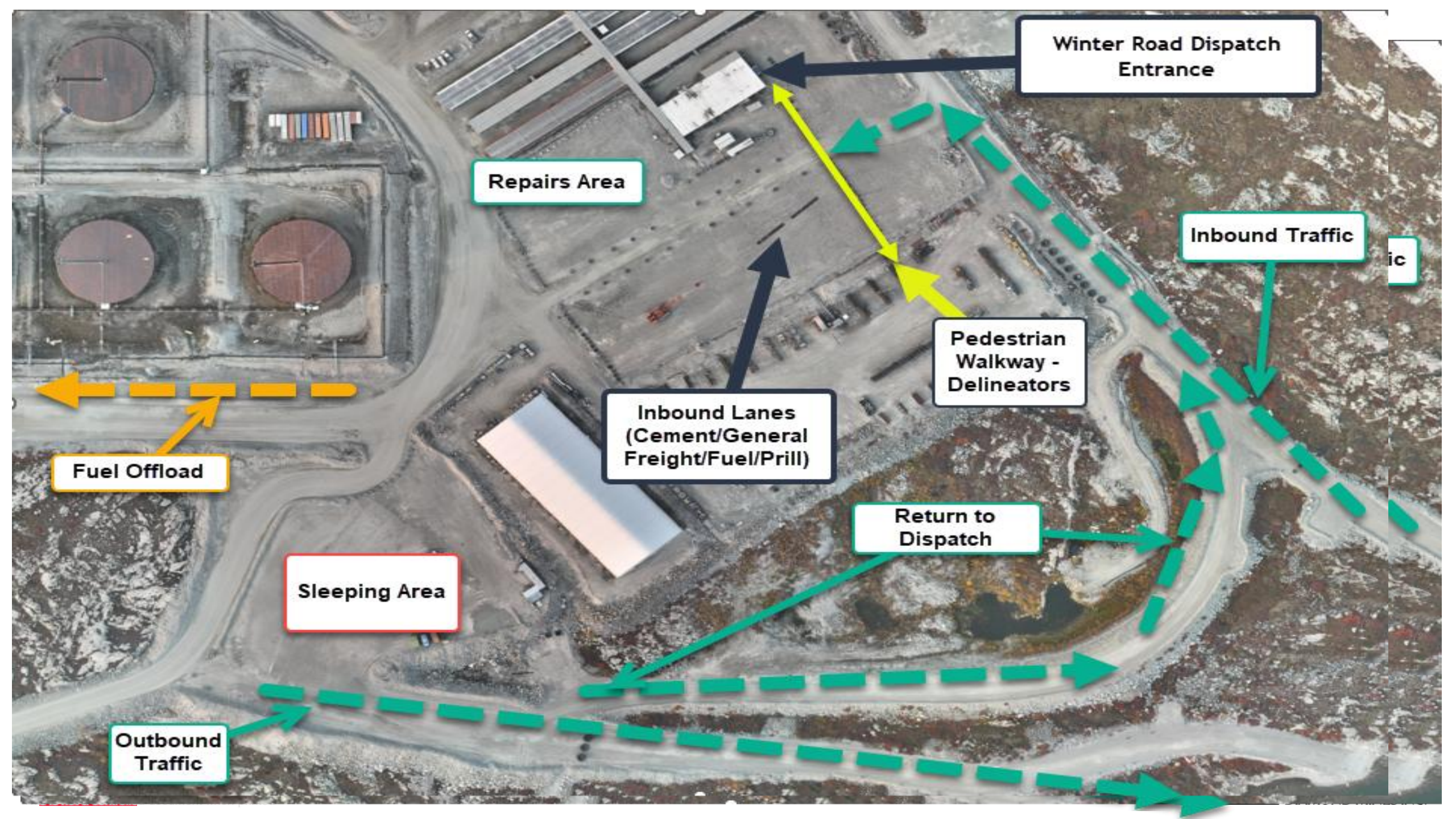
Dispatch Check-in

Inbound & Outbound Truck Parking

Approach to Diavik Dispatch

Depart Diavik





Winter Road Dispatch Entrance

Repairs Area

Inbound Traffic

Pedestrian Walkway - Delineators

Inbound Lanes (Cement/General Freight/Fuel/Prill)

Fuel Offload

Return to Dispatch

Sleeping Area

Outbound Traffic



# Diavik site procedures

## Site Requirements

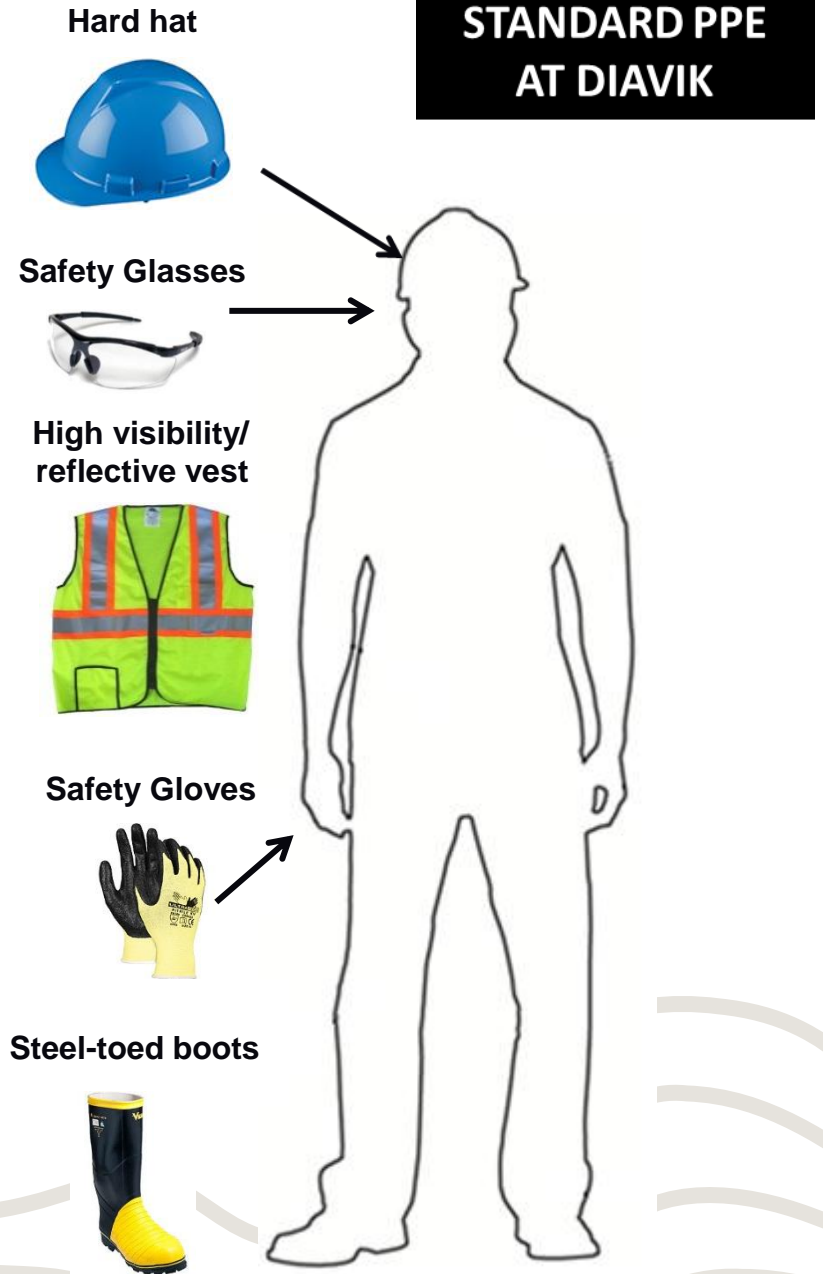
- **Wheel Chocks MUST be applied anytime you are out of the cab of your vehicle.**
- **NEVER** proceed for off load without positive radio communication (LADD 1) with a Marshal.
- **NEVER** proceed for off load without a Marshal and **ALWAYS** follow behind a Marshal vehicle.
- All road traffic signs at Diavik **MUST** be followed.
- All **spills** **MUST** be reported.
- Walking to Dispatch from the Sleeping Area is not permitted. Please drive to Dispatch and park in the appropriate inbound lane when returning to Dispatch from the Sleeping Area.
- Do not block Pedestrian Walkway - identified by Delineators - in the Inbound lanes





# Upon arrival at Diavik

- Radio in to Diavik Dispatch via LADD1 as you approach the arrival ramp to notify the team of your arrival
- Park your truck in your designated lane once you arrive to the dispatch yard
- **Always Chock your tires when outside of the cab**
- All personnel are required to have standard PPE “Personal Protective Equipment”
- **PPE must be worn any time you are outside the cab of your vehicle.**



# Check-in procedure

- Upon arrival at Diavik, drivers hauling cement, prill, freight, and bulk lubes must immediately report to the dispatch office with their paperwork.
- Diavik dispatch will retain paperwork and prepare a site trip ticket.
- Once parked, fuel haulers must radio in to dispatch from their trucks and wait for offload instructions.
- Diavik dispatch will contact the Fuel Transfer Station for fuel haulers and the Marshal for dry freight and advise them you are ready for offloading.
- Offload as per instructions from the Fuel Transfer Station and Site Services personnel.
- Once offload is complete, drivers will be marshaled to the dispatch parking area to pick up your completed paperwork and clearance to leave Diavik.
- Fuel haulers do not require an escort.



# Muster station: south camp and dispatch

- In case of an emergency in your area, you will be directed to the nearest muster station.
- The Marshal will advise of the Muster Station to individuals who are in the field loading or offloading.
- South camp Muster Station: Is located in the south camp common area.

**If you are unsure or have questions about what to do in an Emergency and where to muster, please reach out to Dispatch. Your safety is important to us.**

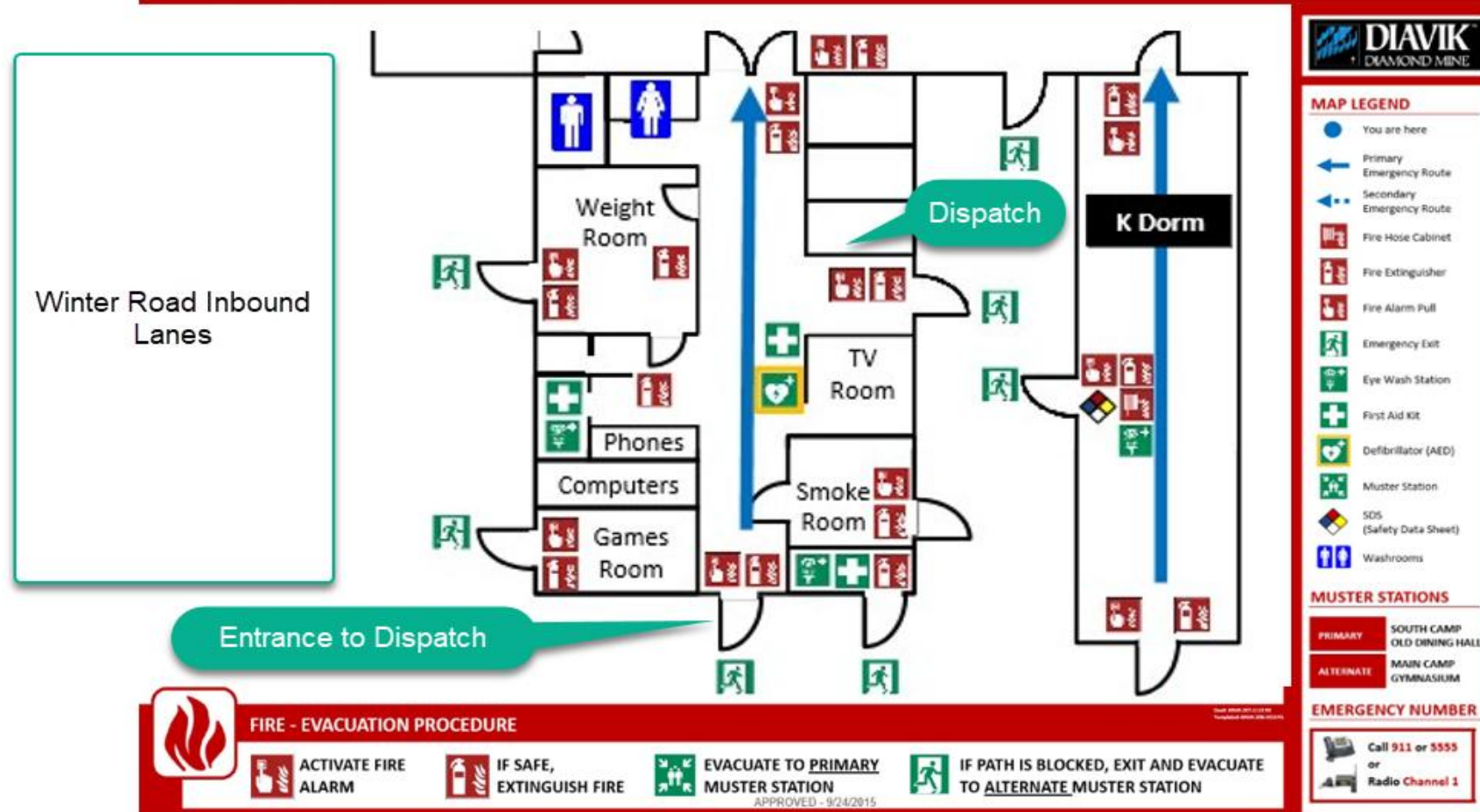




# EMERGENCY EVACUATION PLAN

## South Camp

For the safety of yourself and your co-workers, familiarize yourselves with the emergency exits, equipment and muster stations.





# Preparing to Leave Diavik

- All maintenance issues must be reported to your designated carrier.
- All maintenance assistance will be the responsibility of the carriers.
- When ready to leave site, DDMI dispatch will finalize the paperwork. Please check for accuracy and retain copies for your records.
- If required, Diavik will supply fuel for the safe return to Yellowknife. All requests for fuel must be approved by a Dispatch Coordinator and a **fuel issue slip** must be completed and signed.
- You will be advised of any weather or road conditions and given clearance to leave Diavik.



**Rio Tinto**