



Winter Road 2023

Diavik Site Specific Orientation

Dec 23, 2022

Document Control #: LOGI-603-1211 R1

Template #: DCON-029-1010 R8



Value and Priority

Safety is Diavik's #1 priority.

At Diavik, we believe that all workplace injuries, incidents, occupational illnesses and diseases are preventable.

"If it cannot be done safely, it will not be done at Diavik."

We expect everyone on our mine site to conduct themselves in a manner that upholds this value.



OUR LIFE SAVING RULES

- At Diavik we have Life Saving Rules as a fundamental pillar of our safety management system.
- Our Life Saving Rules are in place specifically to prevent fatalities. Where any individual works outside of these rules they are putting themselves and their co-workers at the risk of serious injury or death.
- These rules form the basis for safe work. They are not negotiable and must be followed without exception.
- Any breach of a Life Saving Rule will be fully investigated with corrective action taken, up to and including removal of site access privileges.



OUR LIFE SAVING RULES



1. Always do a preoperational inspection of your equipment and never operate something you haven't been trained to use.



2. Wear your seatbelt.



3. Make positive contact with the operator of equipment before entering their work area.



4. Never bypass or tamper with a safety device.



5. Isolate energy sources before you start a task.



6. Never work under a suspended load or unsupported ground.



7. Never enter a confined space without a permit.



8. Use fall protection whenever there is a risk of falling.



9. Always wear a personal floatation device or life jacket where there is a risk of drowning.



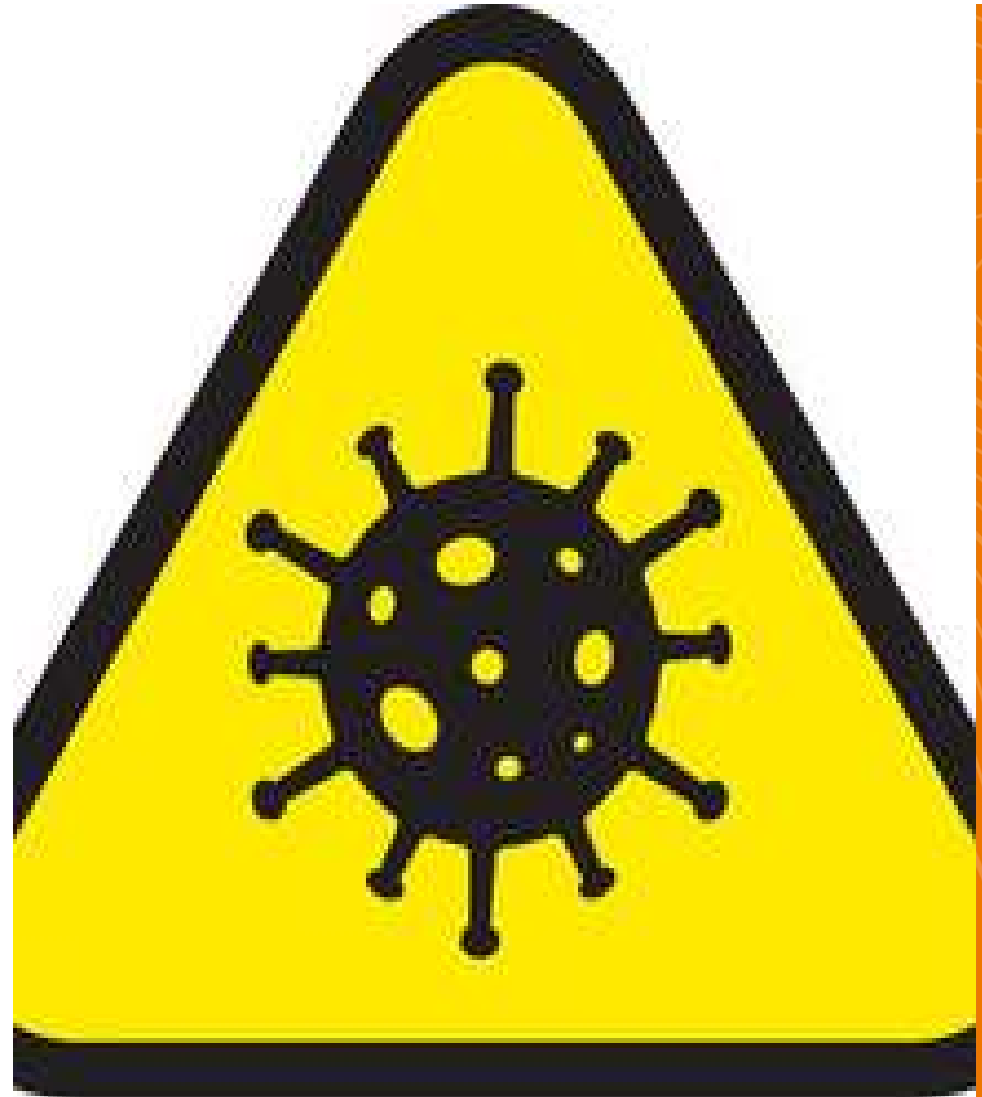
10. Always be "fit for work". Get enough rest to do your job safely. Illegal drugs & alcohol are prohibited.

Critical Risk Management (CRM)

- We want everyone who arrives at Diavik to work safely.
- To help achieve this, we have a fatality risk management program that we need your participation in.
- Prior to departing the Winter Road Dispatch yard to offload your truck, you are required to conduct a walk around of your truck using a CRM check list provided by the Winter Road Dispatch to help make sure that your truck is safe to operate.
- We want to do what we can to make sure your visit to Diavik is safe ... and we need your help to do this.
- Please report any safety concerns that you see when conducting your walk around to the Winter Road Dispatch.

Updated COVID-19 Regulations at Diavik

- The use of masks while at Diavik is no longer mandatory for drivers, and is considered a personal choice
- In the event you become symptomatic or suspect you may have COVID-19 or another viral illness, please contact your carrier representative for further direction

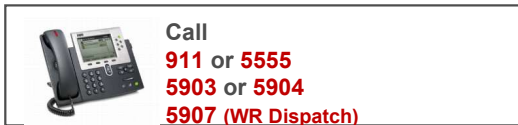


Medical and Emergency Services

MEDICAL SERVICES

The occupational health center is staffed by Physician Assistants 24 hours per day, 7 days a week.

If you feel sick, notify the Field Marshaler over LADD 1 and call the TCWR Joint Venture Medical line at 1-833-247-2619.



EMERGENCY SERVICES

24-hour emergency response is in place for all emergencies including medical, injuries and fire.

1. State: **CODE 1 CODE 1 CODE 1**
2. This is ... (*your name*)
3. There is ... (*state the nature of your emergency*)
4. We are located ... (*state the location of the emergency*)
5. Follow directions given



Site Overview



Fuel Off Load.
South Tank
Farm

Inbound & Outbound
Truck Parking

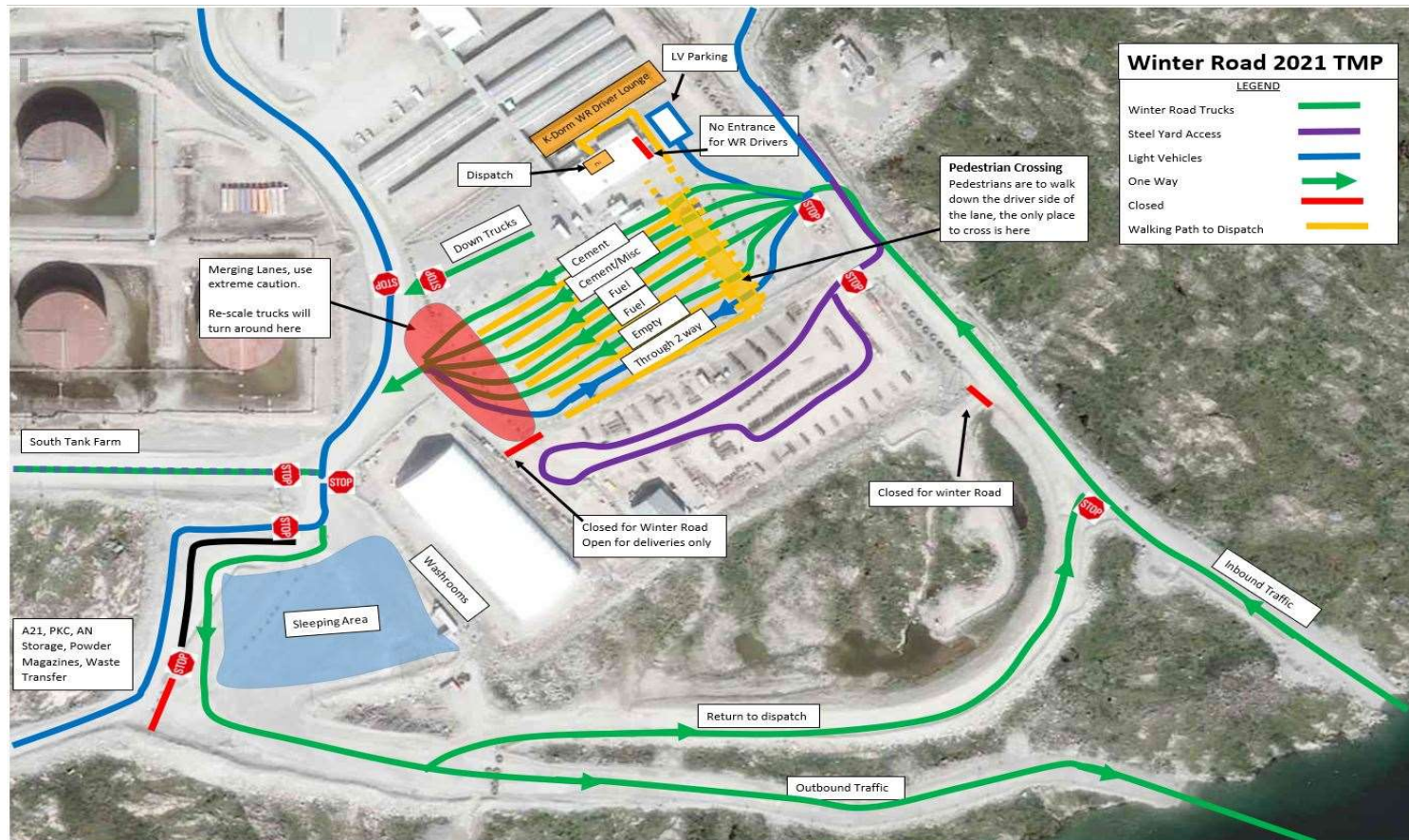
K-Dorm Lounge

Dispatch Check-in

Overflow Parking

Approach to
Diavik
Dispatch

Dispatch Traffic Flow



Diavik Mine Site Procedures

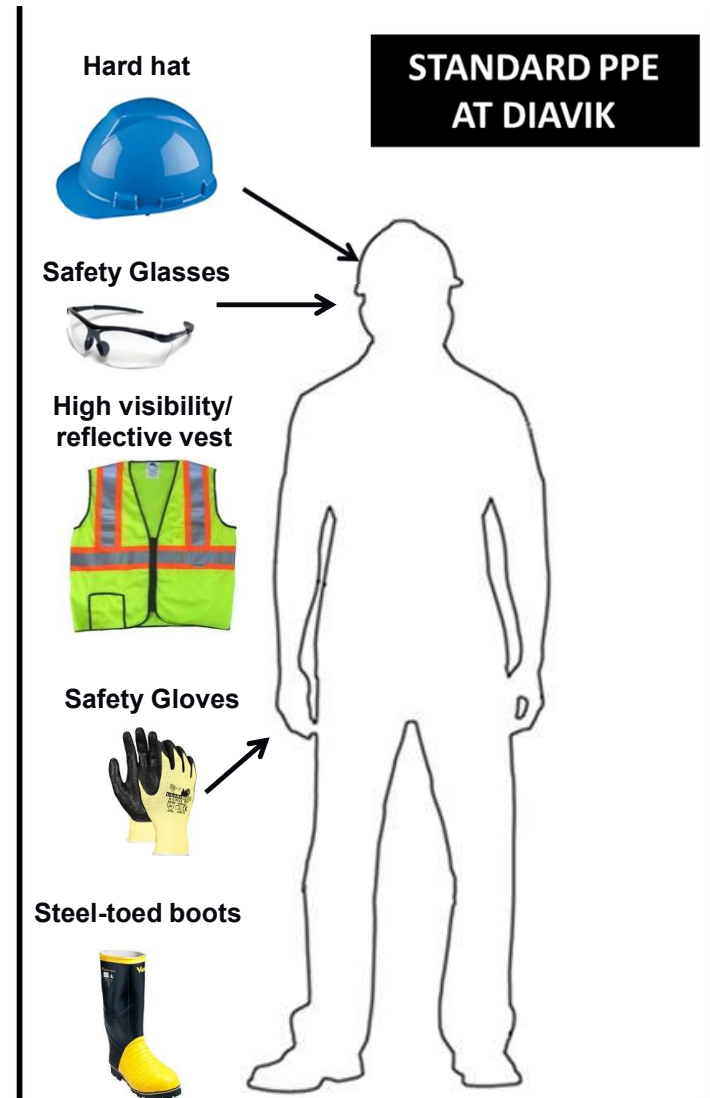
Site Requirements

- When in park, Brakes **MUST** be applied and Chock your vehicle
- **NEVER** proceed for off load without positive radio communication (LADD 1) with Marshaler
- **NEVER** proceed for off load without Marshaler and **ALWAYS** follow behind Marshaler
- All road traffic signs at Diavik **MUST** be followed.
- All **spills** **MUST** be reported



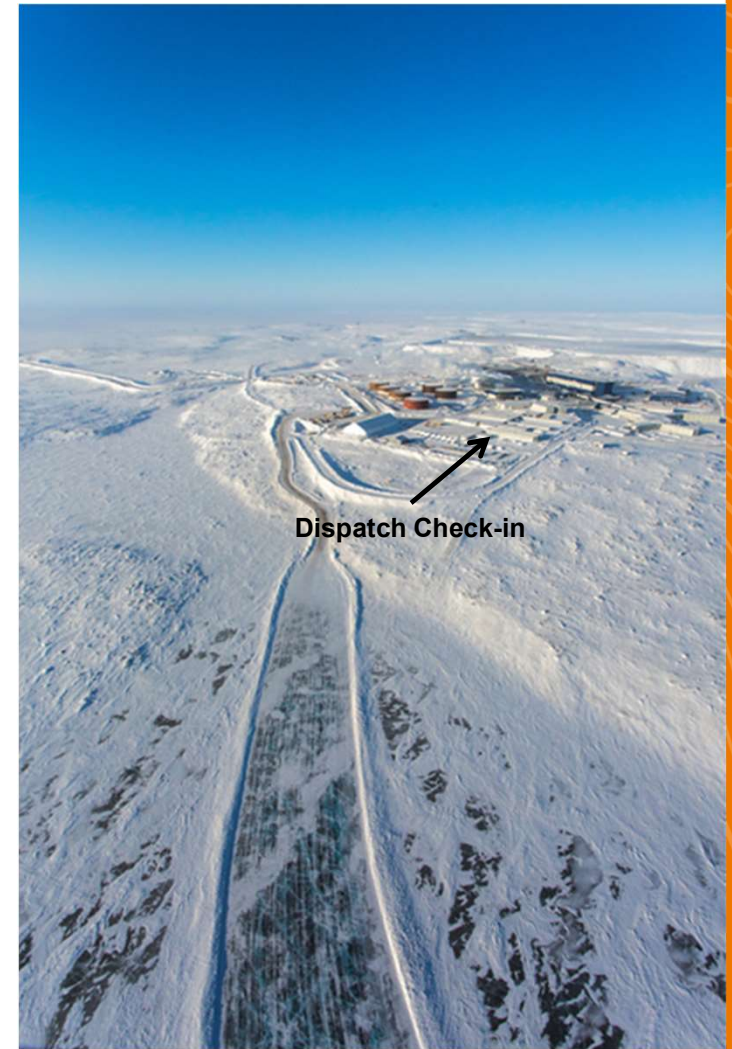
Upon Arrival at Diavik

- Radio in to Diavik Dispatch via LADD1 as you approach the arrival ramp to notify the team of your arrival
- Park your truck in your designated lane once you arrive to the dispatch yard
- Chock your vehicle when parked
- All personnel are required to have standard PPE “Personal Protective Equipment”
- PPE must be worn any time you exit your truck



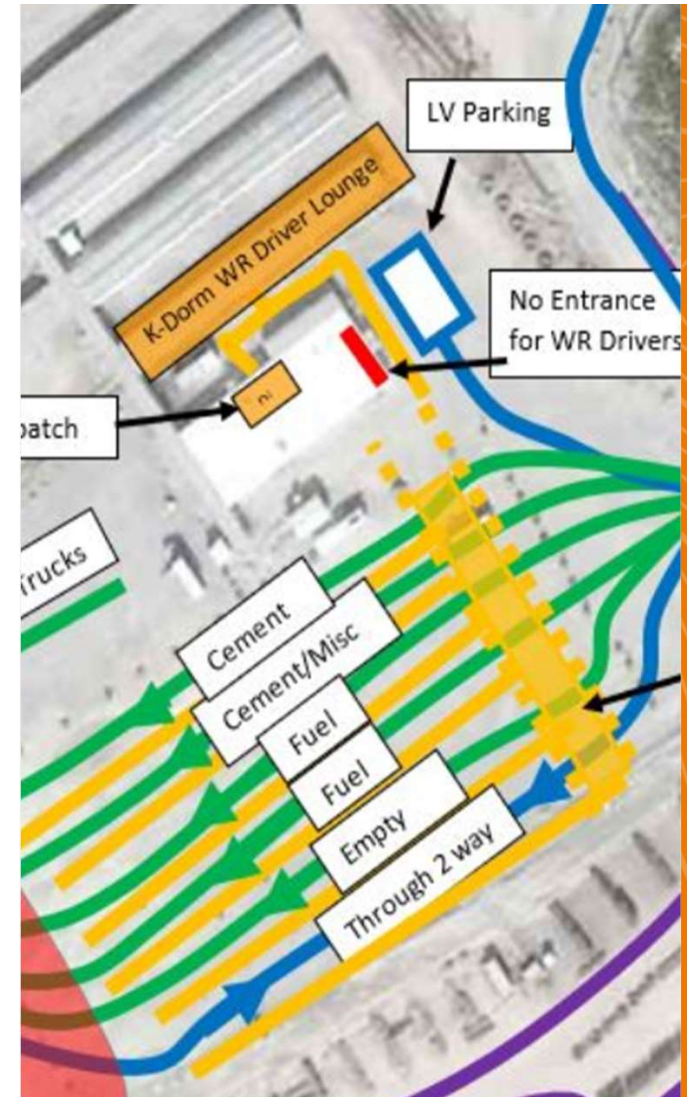
Check-In Procedure

- Upon arrival at Diavik, drivers hauling cement, prill, freight, and bulk lubes must immediately report to the dispatch office with their paperwork
- DDMI dispatch will retain paperwork and prepare a “**site trip ticket**”
- Once parked, fuel haulers must radio in to dispatch from their trucks and wait for offload instructions
- DDMI dispatch will contact the Fuel Transfer Station for fuel haulers and the Marshals for dry freight and advise them you are ready for offloading.
- Offload as per instructions from the Fuel Transfer Station and Site Services personnel
- Once offload is complete, you will be marshaled to the dispatch parking area to pick up your completed paperwork and clearance to leave Diavik.
- Fuel haulers do not require an escort.



Driver's Lounge – K Dorm

- The K Dorm lounge and the Dispatch area are available to drivers while on site.
- K Dorm is available with two TV rooms, eating areas, washrooms and a fully stocked kitchen. It is accessed from outside as directed by the Dispatch personnel.
- All other areas at Diavik are not permitted for access. This includes Diavik Main Accommodations.



Muster Station: K Dorm and Dispatch

- In case of an emergency in your area, you will be directed to the nearest muster station.
- The Marshal will show the Muster Station to individuals who are processing through Dispatch or in K Dorm holding area.
- Primary Muster Station: outside between Dispatch and K Dorm with an alternate of a heated bus.

If you are unsure or have questions about what to do in an Emergency and where to muster, please reach out to Dispatch. Your safety is important to us.

EMERGENCY EVACUATION PROCEDURE K DORM



In the event of a
fire:



ACTIVATE FIRE ALARM



IF SAFE, EXTINGUISH FIRE



**EVACUATE TO PRIMARY
MUSTER STATION:**
**Outside between K Dorm and
Winter Road Dispatch Area.**



**IF YOUR ROUTE IS
BLOCKED, EXIT AND
EVACUATE TO ALTERNATE
MUSTER STATION:**

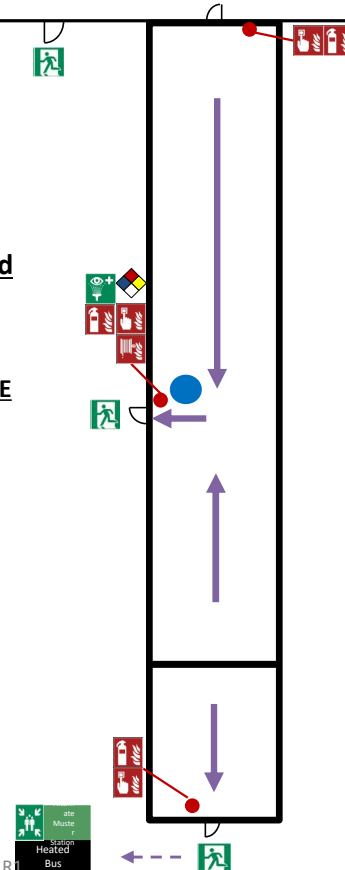
Heated Bus.



Appropriate seasonal clothing is required. Jacket to withstand cold temperatures in the winter, and bring all PPE you have handy.

MAP LEGEND

- | | |
|---------------------------|-------------------------|
| You are here | Emergency Exit |
| Primary Emergency Route | Eye Wash Station |
| Secondary Emergency Route | First Aid Kit |
| Fire Hose Cabinet | Defibrillator (AED) |
| Fire Extinguisher | Muster Station |
| Fire Alarm Pull | SDS (Safety Data Sheet) |



Preparing to Leave Diavik

- All maintenance issues must be reported to your designated carrier
- All maintenance assistance will be the responsibility of the carriers
- When ready to leave site, DDMI dispatch will finalize the paperwork. Please check for accuracy and retain copies for your records
- If required, Diavik will supply fuel for the safe return to Yellowknife. All requests for fuel must be approved by a Dispatch Coordinator and a “fuel issue slip ”must be completed and signed
- You will be advised of any weather or road conditions and given clearance to leave Diavik

