



Winter Road 2021

Diavik Site Specific Orientation

January 08, 2021

Document Control #: LOGI-603-1211 R1
Template #: DCON-029-1010 R8



Value and Priority

Safety is our most important value.

At Diavik, we believe that all workplace injuries, incidents, occupational illnesses and diseases are preventable.

Diavik's slogan is "If it cannot be done safely, it will not be done at Diavik."

We expect everyone on our mine site to conduct themselves in a manner that upholds this value.



OUR LIFE SAVING RULES

- At Diavik we have Life Saving Rules as a fundamental pillar of our safety management system.
- Our Life Saving Rules are in place specifically to prevent fatalities. Where any individual works outside of these rules they are putting themselves and their co-workers at the risk of serious injury or death.
- These rules form the basis for safe work. They are not negotiable and must be followed without exception.
- Any breach of a Life Saving Rule will be fully investigated with corrective action taken, up to and including removal of site access privileges.



OUR LIFE SAVING RULES



1. Always do a preoperational inspection of your equipment and never operate something you haven't been trained to use.



2. Wear your seatbelt.



3. Make positive contact with the operator of equipment before entering their work area.



4. Never bypass or tamper with a safety device.



5. Isolate energy sources before you start a task.



6. Never work under a suspended load or unsupported ground.



7. Never enter a confined space without a permit.



8. Use fall protection whenever there is a risk of falling.



9. Always wear a personal floatation device or life jacket where there is a risk of drowning.



10. Always be "fit for work". Get enough rest to do your job safely. Illegal drugs & alcohol are prohibited.

Critical Risk Management (CRM)

- We want everyone who arrives at Diavik to work safely.
- To help achieve this, we have a fatality risk management program that we need your help with.
- Prior to departing the Winter Road Dispatch to offload your truck, we want you to conduct a walk around of your truck using a check list provided by the Winter Road Dispatch to help make sure that your truck is safe to operate.
- Please help us to make sure all employees and visitors at Diavik stay safe from harm and report any safety concerns that you see when conducting your walk around to the Winter Road Dispatch.
- We want to do what we can to make sure your visit to Diavik is safe ... and we need your help to do this.

COVID-19

Responsibilities

It is the responsibility of all individuals working at Diavik to follow the COVID-19 protocols, both while off and on site.

Protocols are based on advice from public health and in place to prevent the spread of COVID-19 while working at our remote location.

They allow us to return home safely.



Facial barriers

Facial barriers must be worn at all times by Winter Road drivers unless eating, drinking or smoking.

Facial barriers include non-medical cloth or surgical masks that

- do not have a vent
- fit snug against the face
- are made with two layers of fabric

Bufs, bandanas or handkerchiefs are not allowed.



Physical Distancing

Ensure there is only ever 1 person in the cab of the vehicle at a time.

Maintain 2m/6ft from other workers.

Follow all posted signs and direction for designated trucker areas in fueling and mechanic zones.

Follow designated maximum capacity limits on rooms.

RioTinto

Transmission reduction – **STOP** the spread

Keep your distance

Stay 2 m, 6 ft or 2 arms lengths from other people, whenever possible



Self-monitoring every day

Daily self-monitoring is required on site.

Monitor yourself for symptoms each day. If you have symptoms while you are on site at Diavik, ensure you remain isolated and notify the Field Marshaller over LADD 1 and call the

Record your temperature and symptoms on your self-monitoring form daily.

Carry your self-monitoring form with you at all times while on site.

FILL THIS IN EVERY DAY WHILE AT DIAVIK

Date each day, check your temperature and then check yourself for any of the symptoms.

Day	1	2	3	4	5	6	7	8	9	10	11	12	13	14
Date														
No symptoms	<input type="checkbox"/>	<input type="checkbox"/>	<input type="checkbox"/>	<input type="checkbox"/>	<input type="checkbox"/>	<input type="checkbox"/>	<input type="checkbox"/>	<input type="checkbox"/>	<input type="checkbox"/>	<input type="checkbox"/>	<input type="checkbox"/>	<input type="checkbox"/>	<input type="checkbox"/>	<input type="checkbox"/>
Symptoms	If you develop symptoms or a temperature above 37.3°C immediately return to your room, call ext. 5901 and inform your supervisor													
Temperature (°C)														
Chills / feverish														
Difficulty breathing	CALL EXT. 5901 IMMEDIATELY													
Cough														
Runny nose														
Nausea / vomiting / diarrhea														
Sore throat														
Loss of appetite														
Tiredness														
Muscle aches														
Headache														
Loss of sense of smell/taste														
Generally feeling unwell														
Other: specify														

Please keep this form with you when you're in the dining hall.

Record your temperature using the facial scanner

Date each day, check your temperature and then check yourself for any of the symptoms.

Day	1	2	3	4	5	6	7	8	9	10	11	12	13	14
Date														
No symptoms	<input type="checkbox"/>	<input type="checkbox"/>	<input type="checkbox"/>	<input type="checkbox"/>	<input type="checkbox"/>	<input type="checkbox"/>	<input type="checkbox"/>	<input type="checkbox"/>	<input type="checkbox"/>	<input type="checkbox"/>	<input type="checkbox"/>	<input type="checkbox"/>	<input type="checkbox"/>	<input type="checkbox"/>
Symptoms	If you develop symptoms or a temperature above 37.3°C immediately return to your room, call ext. 5901 and inform your supervisor													
Temperature (°C)														
Chills / feverish														
Difficulty breathing	CALL EXT. 5901 IMMEDIATELY													
Cough														
Runny nose														
Nausea / vomiting / diarrhea														
Sore throat														
Loss of appetite														
Tiredness														
Muscle aches														
Headache														
Loss of sense of smell/taste														
Generally feeling unwell														
Other: specify														

Medical and Emergency Services

MEDICAL SERVICES

The occupational health center is staffed by Physician Assistants 24 hours per day, 7 days a week.

If you feel sick, do not visit the occupational health center. Notify the Field Marshaler over LADD 1 and call the TCWR Joint Venture Medical line at 1-833-247-2619.



EMERGENCY SERVICES

24 hour emergency response is in place for all emergencies including medical, injuries and fire.

1. State: **CODE 1 CODE 1 CODE 1**
2. This is ... (*your name*)
3. There is ... (*state the nature of your emergency*)
4. We are located ... (*state the location of the emergency*)
5. Follow directions given



Site Overview

Fuel Off Load.
South Tank
Farm

Inbound & Outbound
Truck Parking

Overflow Parking

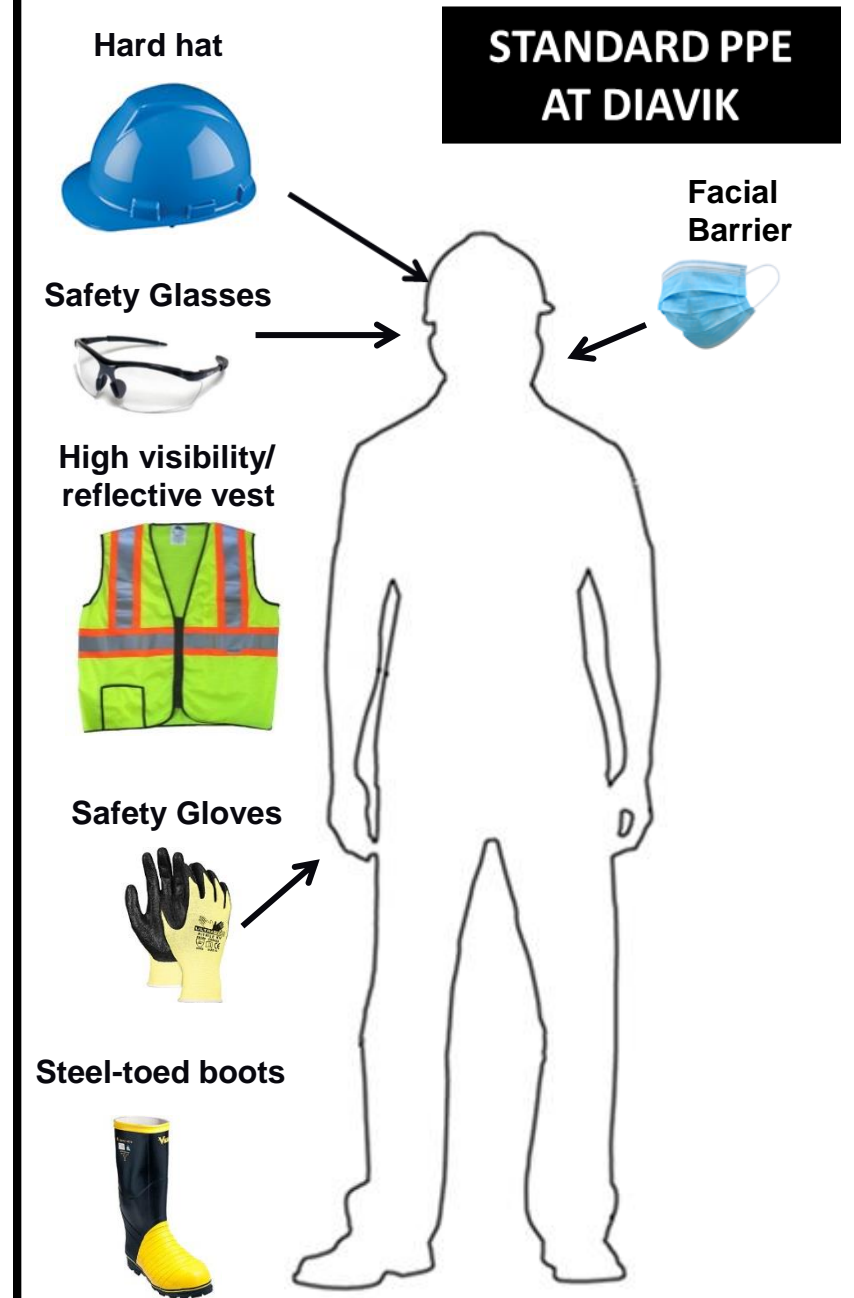
K-Dorm- Truckers
Lounge

Dispatch Check-in

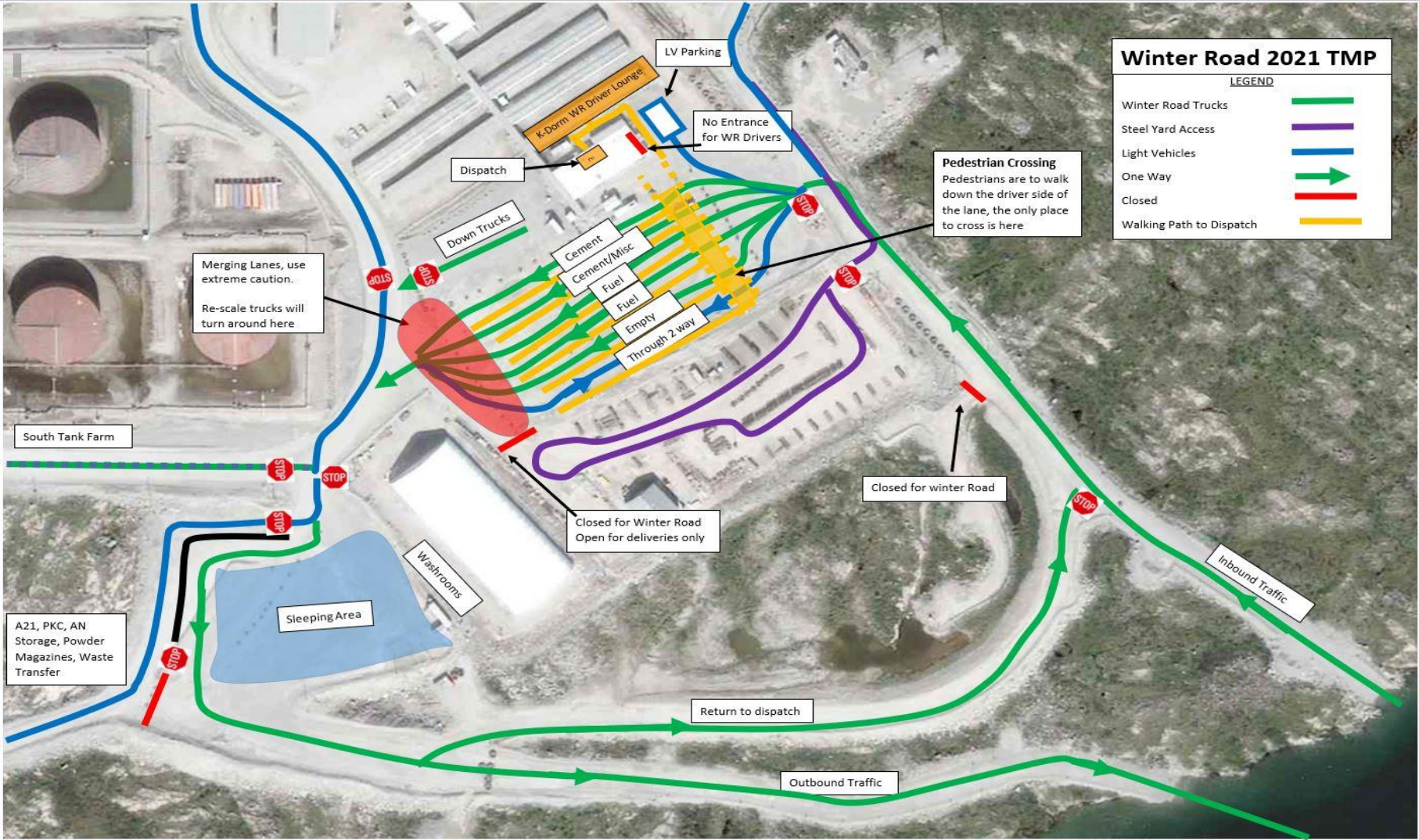
Diavik
Approach to
Dispatch

Upon Arrival at Diavik

- All personnel are required to have Standard PPE “Personal Protective Equipment”
- In addition to wearing the required Standard PPE, all personnel are required to wear a facial barrier at all times unless eating, drinking or smoking covering both your mouth and nose
- PPE must be worn any time you exit your truck
- You must adhere to physical distancing procedures by maintaining 2 meters (6 feet) of distance between yourself and ALL other personnel
- Chock your vehicle when parked

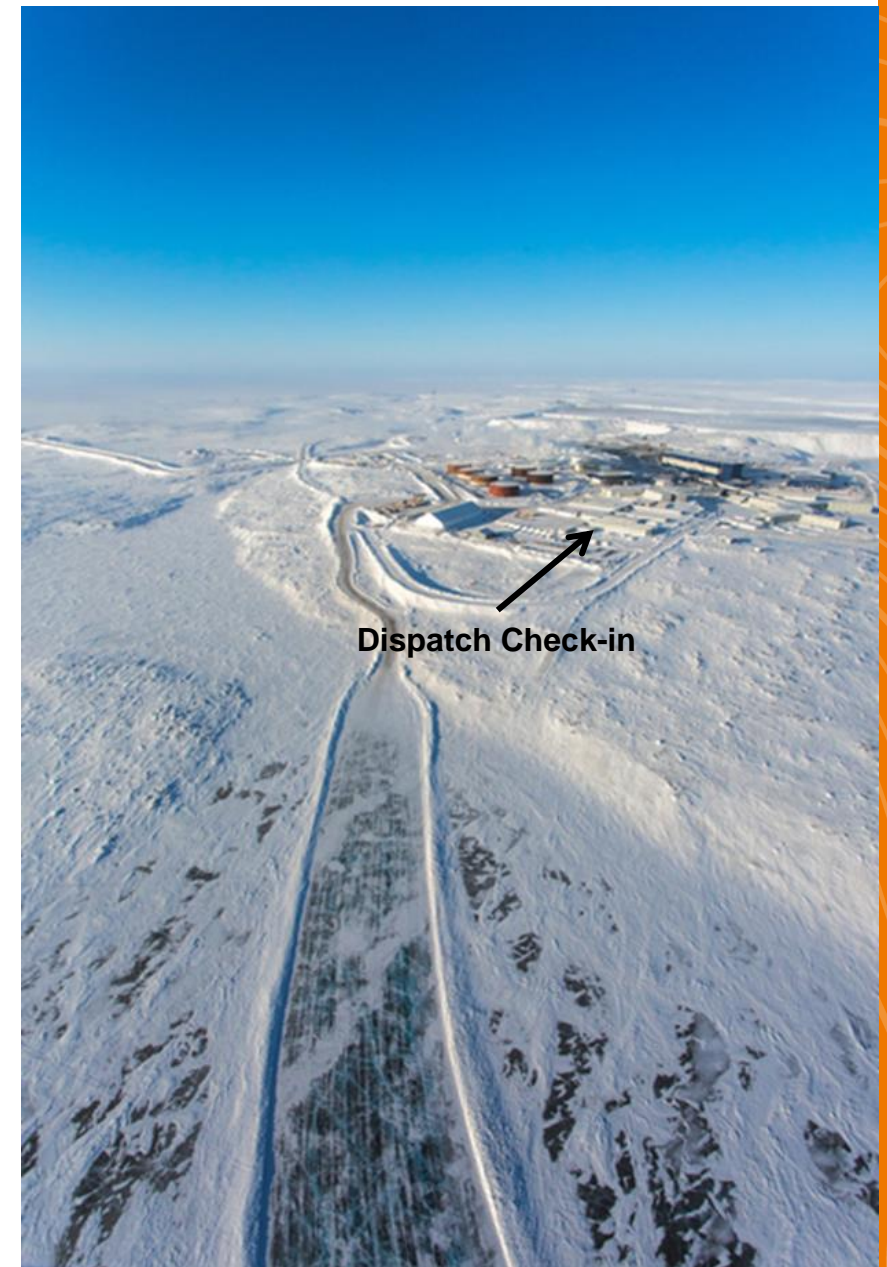


Dispatch Traffic Flow



Check-In Procedure

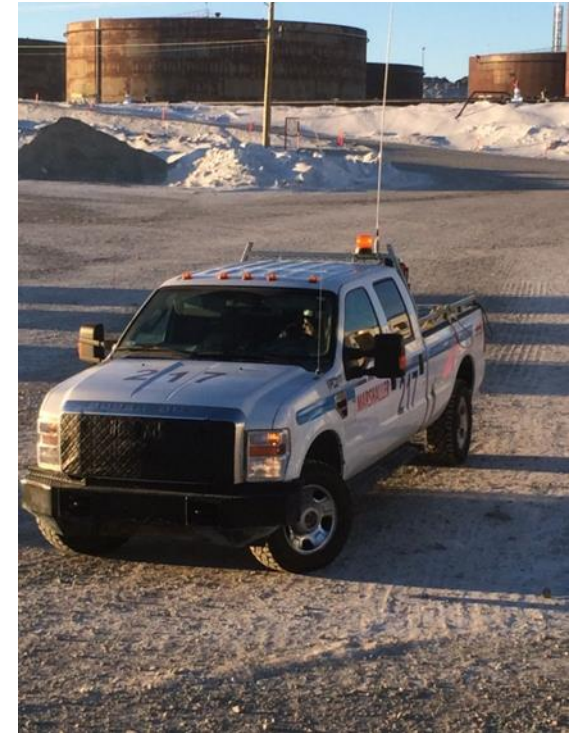
- Report to dispatch immediately upon arrival at Diavik
- DDMI dispatch will retain paper work and prepare a **“site trip ticket”**
- DDMI dispatch will contact the Fuel Transfer Station for fuel haulers and the Marshals for dry freight, and advise them you are ready for off loading.
- Off load as per instructions from the Fuel Transfer Station and Site Services personnel, while maintaining at least 2 meters of distance between all personnel
- Once off load is complete, you will be marshaled to the dispatch parking area to pickup your completed paper work and clearance to leave Diavik.
- Fuel haulers do not require an escort.



Diavik Mine Site Procedures

Site Requirements

- When in park mode Brakes **MUST** be applied and Chock your vehicle
- **NEVER** proceed for off load without positive radio communication (LADD 1) with Marshaler
- **NEVER** proceed for off load without Marshaler and **ALWAYS** follow behind Marshaler
- All road traffic signs at Diavik **MUST** be followed.
- All **spills** **MUST** be reported



Holding area – K Dorm

Winter road drivers will be segregated from the Operational workforce as an additional COVID-19 control.

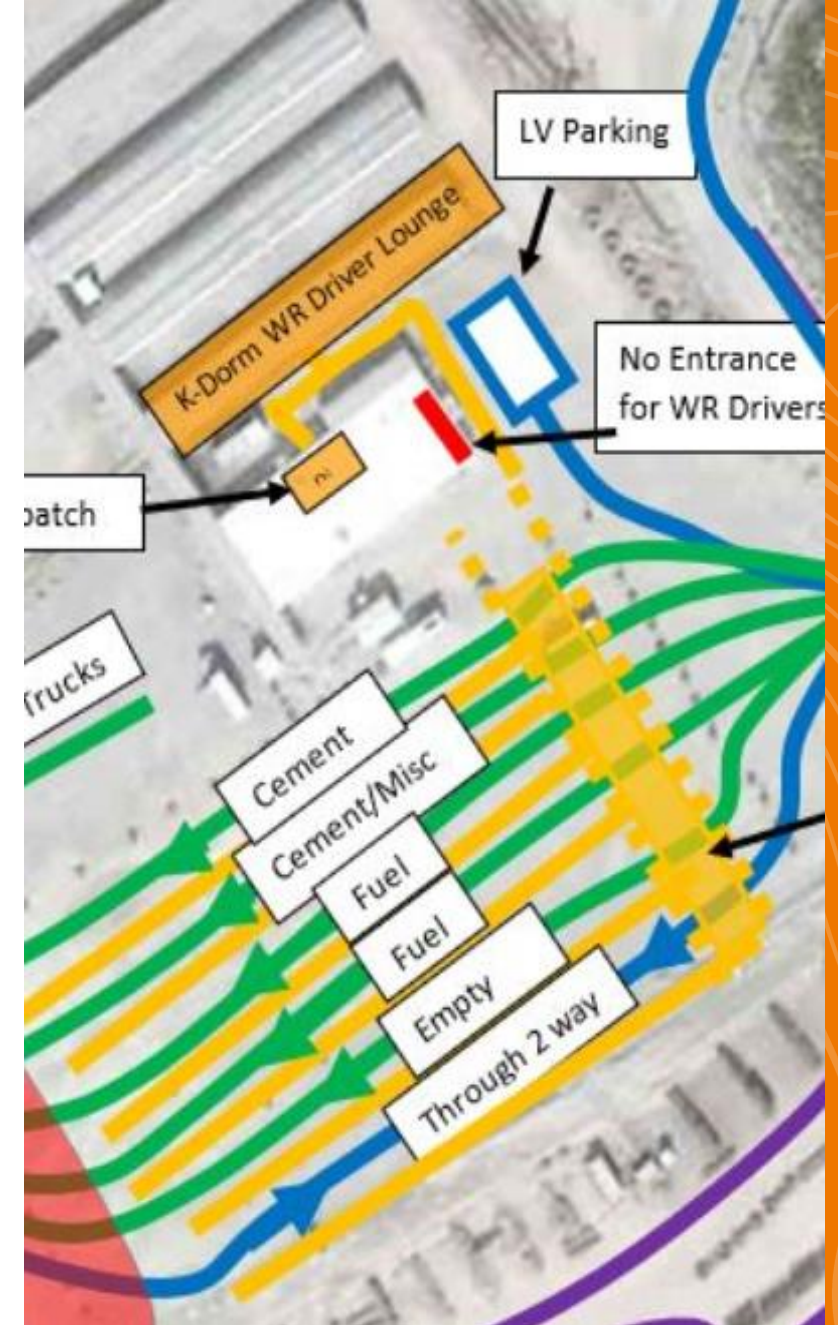
South Camp K-dorm holding area and Dispatch area are available for drivers while on site.

Main camp and South camp are off limits to drivers.

K dorm is available with two TV rooms, eating areas, washrooms and a kitchen. It is accessed from outside as directed from the Dispatch office.

Maintain a 2m (6ft) distance from others at all times and wear a facial barrier unless eating or drinking in the dorm, or smoking in the smoking area that is available outside between WR dispatch and K dorm.

K dorm and Dispatch areas have capacity limits posted; please adhere to these maximums.



Muster Station: K Dorm and Dispatch

In case of an emergency in your area, you will be directed to the nearest muster station.

The Marshal will show the Muster Station to individuals who are processing through Dispatch or in K Dorm holding area.

Primary Muster Station: outside between Dispatch and K Dorm with an alternate of a heated bus.

PLEASE ASK IF YOU HAVE ANY QUESTIONS OF WHAT TO DO OR WHERE TO MUSTER IN AN EMERGENCY

EMERGENCY EVACUATION PROCEDURE

K DORM



In the event of a
fire:



ACTIVATE FIRE ALARM



IF SAFE, EXTINGUISH FIRE



**EVACUATE TO PRIMARY
MUSTER STATION:**
**Outside between K Dorm and
Winter Road Dispatch Area.**



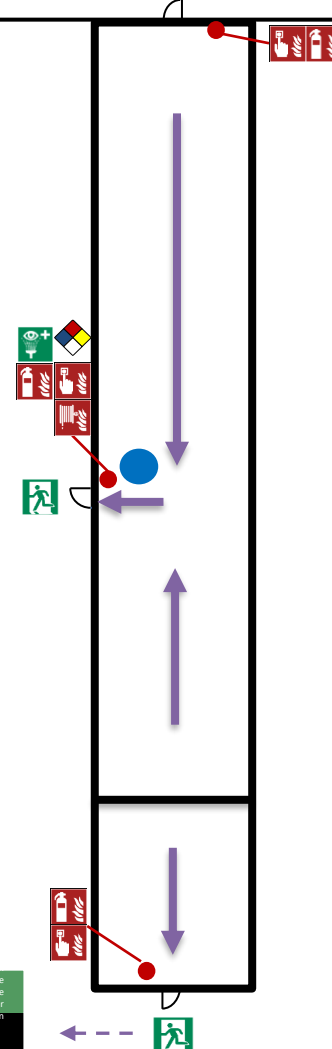
**IF YOUR ROUTE IS
BLOCKED, EXIT AND
EVACUATE TO ALTERNATE
MUSTER STATION:**
Heated Bus.



Appropriate seasonal clothing is required. Jacket to withstand cold temperatures in the winter, and bring all PPE you have handy.

MAP LEGEND

- | | |
|---------------------------|-------------------------|
| You are here | Emergency Exit |
| Primary Emergency Route | Eye Wash Station |
| Secondary Emergency Route | First Aid Kit |
| Fire Hose Cabinet | Defibrillator (AED) |
| Fire Extinguisher | Muster Station |
| Fire Alarm Pull | SDS (Safety Data Sheet) |



Meals

Food is available in the fridge in the WR Dispatch area.

Microwave, kitchen and eating areas are available in K dorm – holding area.

Do not remove your facial barrier until you are ready to eat; and replace it prior to leaving your table.

The cafeteria in Main Camp is off limits.

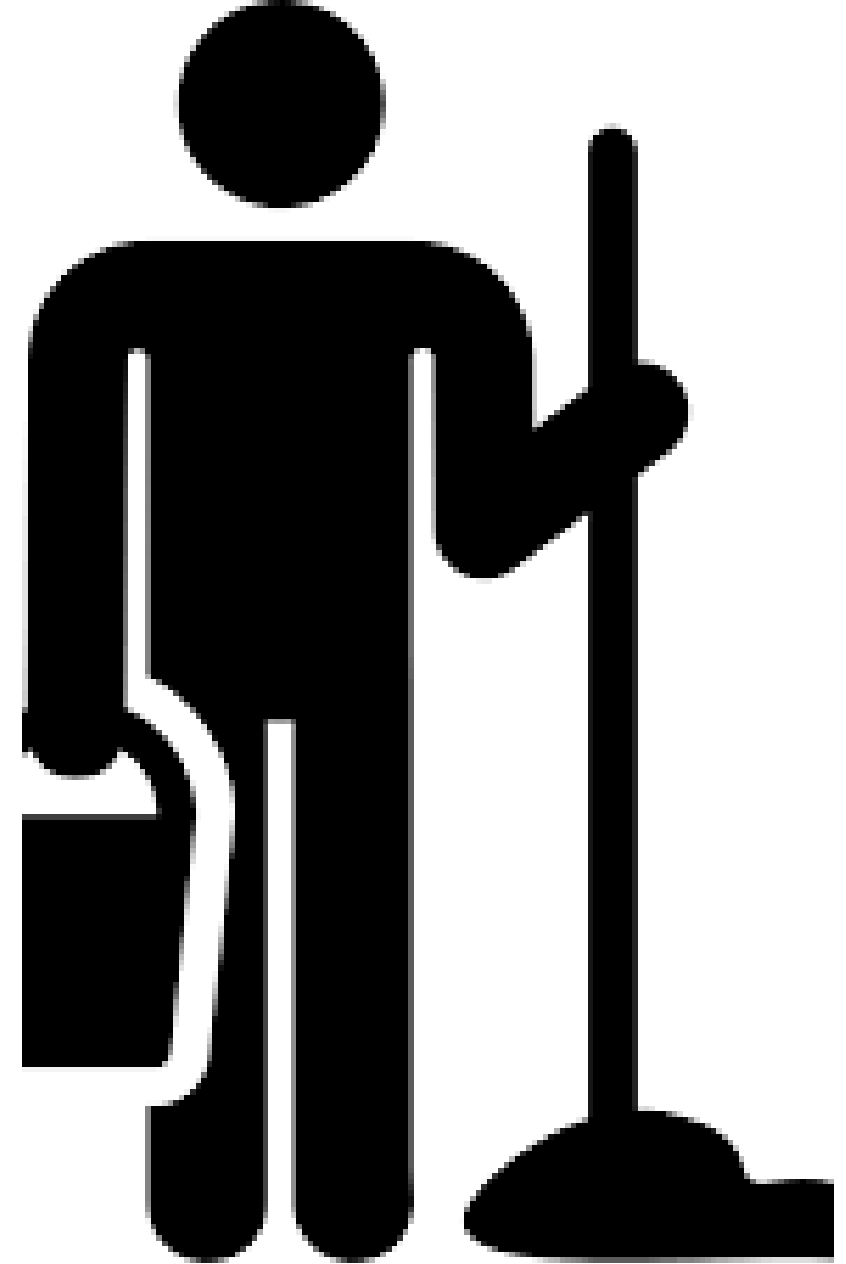


Cleaning – K Dorm

Cleaning supplies are provided in each area, please wipe down your space after each use.

Housekeeping will be cleaning K-dorm regularly, requiring areas within the dorm to be intermittently closed off to drivers.

Please be aware of posted schedules to prepare for these closures.



Preparing to leave Diavik

- All maintenance issues must be reported to your designated carrier
- All maintenance assistance will be the responsibility of the carriers
- When ready to leave site, DDML dispatch will finalize the paperwork. Please check for accuracy and retain copies for your records
- If required, Diavik will supply fuel for the safe return to Yellowknife. All requests for fuel must be approved by the Senior Dispatch Coordinator and a “fuel issue slip” completed and signed
- You will be advised of any weather or road conditions and given clearance to leave Diavik

