

Diavik Mine Site Dispatch and Procedures Winter Road Operations

October 07, 2016

Document Control #:LOGI-603-1211 R0
Template #: DCON-029-1010 R7



Value and Priority

SAFETY IS OUR MOST IMPORTANT VALUE

At Diavik, we believe that all workplace injuries, incidents, occupational illnesses and diseases are preventable.

Diavik's slogan is "If It Cannot Be Done Safely, It Will Not Be Done At Diavik."

We expect everyone on our mine site to conduct themselves in a manner that upholds this value





South Camp
Accommodations

Parking for Trucks
Staying for Meal or
Rest Services

Dispatch Check-in and
Truckers Lounge

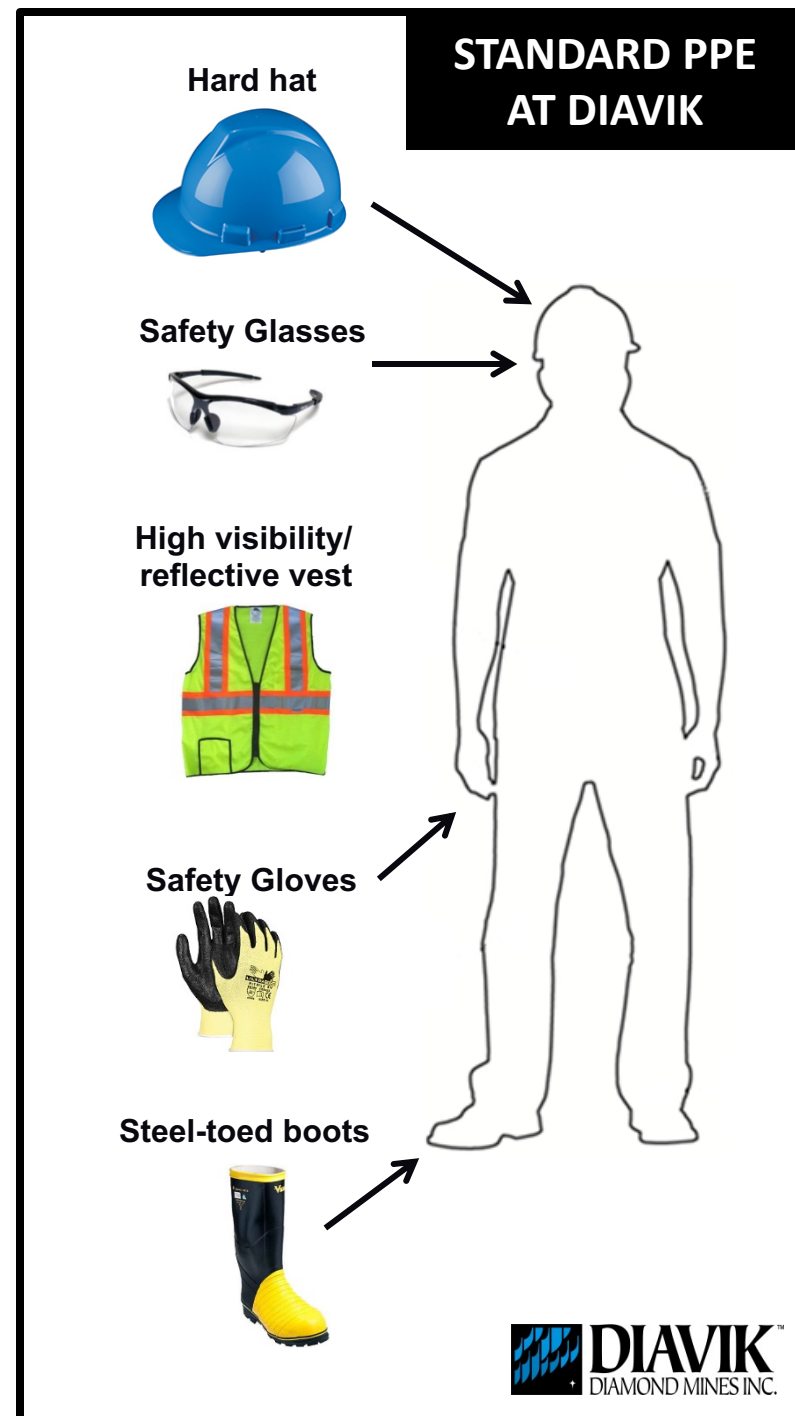
Fuel Off Load.
South Tank Farm

Inbound & Outbound
Truck Parking

Diavik
Approach to
Dispatch

Upon Arrival At Diavik

- All personnel are required to have Standard PPE (Personal Protective Equipment)
- You must wear your PPE any time you exit your truck
- Chock your vehicle when parked



Check-In Process

- Report to dispatch immediately upon arrival at Diavik
- DDMI dispatch will retain paper work and prepare a **“site trip ticket”**
- DDMI dispatch will contact the Fuel Transfer Station for fuel haulers and the Marshals for dry freight, and advise them you are ready for off loading
- Off load as per instructions from the Fuel Transfer Station and Site Services personnel
- Once off load is complete, you will be marshaled to the dispatch parking area to pickup your completed paper work and clearance to leave Diavik.
- Fuel haulers do not require an escort.



Dispatch Check-in



Diavik Mine Site Procedures

Site Requirements

- When in park mode Brakes **MUST** be applied and Chock your vehicle
- **NEVER** proceed for off load without positive radio communication (LAD 1) with Marshaler
- **NEVER** proceed for off load without Marshaler and **ALWAYS** follow behind Marshaler
- All road traffic signs at Diavik **MUST** be followed.
- All **spills** **MUST** be reported



Critical Risk Management (CRM)

- We want everyone who arrives at Diavik to work safely.
- To help achieve this, we have a fatality risk management program that we need your help with.
- Prior to departing the Winter Road Dispatch to offload your truck, we want you to conduct a walk around of your truck using a check list provided by the Winter Road Dispatch to help make sure that your truck is safe to operate.
- Please help us to make sure all employees and visitors at Diavik stay safe from harm and report any safety concerns that you see when conducting your walk around to the Winter Road Dispatch.
- We want to do what we can to make sure your visit to Diavik is safe ... and we need your help to do this.

OUR LIFE SAVING RULES

- At Diavik we have Life Saving Rules as a fundamental pillar of our safety management system.
- Our Life Saving Rules are in place specifically to prevent fatalities. Where any individual works outside of these rules they are putting themselves and their co-workers at the risk of serious injury or death.
- These rules form the basis for safe work. They are not negotiable and must be followed without exception.
- Any breach of a Life Saving Rule will be fully investigated with corrective action taken, up to and including removal of site access privileges.



OUR LIFE SAVING RULES



1. Always do a preoperational inspection of your equipment and never operate something you haven't been trained to use.



2. Wear your seatbelt.



3. Make positive contact with the operator of equipment before entering their work area.



4. Never bypass or tamper with a safety device.



5. Isolate energy sources before you start a task.



6. Never work under a suspended load or unsupported ground.



7. Never enter a confined space without a permit.



8. Use fall protection whenever there is a risk of falling.



9. Always wear a personal floatation device or life jacket where there is a risk of drowning.



10. Always be "fit for work". Get enough rest to do your job safely. Illegal drugs & alcohol are prohibited.

Medical and Emergency Services

MEDICAL SERVICES

To access 24 hour medical care at the Diavik mine contact Dispatch on Lad 1 or go to the Dispatch Office and request to be taken to the Site Medics.



EMERGENCY SERVICES

24 hour emergency response is in place for all emergencies including medical, injuries and fire.



Call
911 or **5555**
5903 or **5904**
7130 or **7132 (WR Dispatch)**

or



Radio
Lad 1

1. State: **CODE 1 CODE 1 CODE 1**
2. This is ... (*your name*)
3. There is ... (*state the nature of your emergency*)
4. We are located ... (*state the location of the emergency*)
5. Follow directions given

Medical and Emergency Services

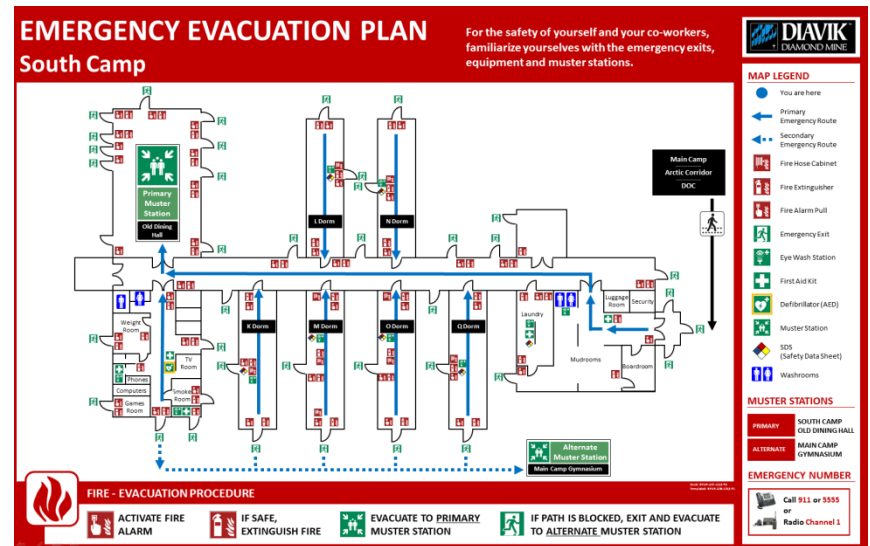
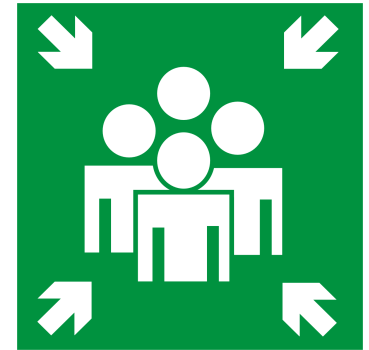
MUSTER STATION

In case of an emergency in your area, you will be directed to the nearest muster station.

The Marshal will show the Muster Station to individuals who are resting at South Camp.

Note that renovation construction work is ongoing in South Camp. Signs may be posted directing you to a temporary muster point.

**PLEASE ASK IF YOU HAVE AN
QUESTIONS OF WHAT TO DO OR WHERE
TO MUSTER IN AN EMERGENCY**



Services

MEALS

- The truckers lounge (located in dispatch) is available for an assortment of sandwiches, pastries, hot and cold beverages and the comforts to relax and watch TV
- Main Camp dining lounge is available for hot meals at designated times



ACCOMMODATIONS / REST AREA

- On site accommodations are available for overnight or extended stay
- Truckers who require a rest area for overnight or extended stay will be directed to the designated rest area



PARKING

- Inbound Parking: at front of dispatch parking lot
- Outbound Parking: at back of dispatch parking lot; NOT A REST AREA

MAINTENANCE

- All maintenance issues must be reported to your designated carrier
- All maintenance assistance will be the responsibility of the carriers

Preparing to leave Diavik

- When ready to leave site, DDMI dispatch will finalize the paperwork. Please check for accuracy and retain copies for your records
- If required, Diavik will supply fuel for the safe return to Yellowknife. All requests for fuel must be approved by the Senior Dispatch Coordinator and a “fuel issue slip” completed and signed
- You will be advised of any weather or road conditions and given clearance to leave Diavik

